

THAWZALL

Tamarack Industries

FLAMELESS GLYCOL & AIR HEATER

SAFE & RELIABLE HEATING SOLUTIONS

OPTIONAL LED LIGHT TOWER



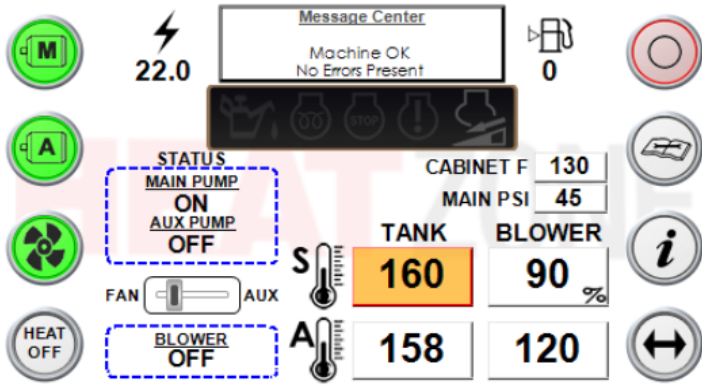
TIER 4 FINAL ENGINES • REDUCE CARBON FOOTPRINT ON JOB SITES • LOWER EMISSIONS

FEATURES

- THAW UP TO 6,000 ft²
- PUMP GLYCOL OVER 120 ft HIGH
- ON BOARD AIR COMPRESSOR FOR EVACUATING HOSES
 - NO DEF FLUID REQUIRED
- VARIABLE AIR FLOW UP TO 3000 CFM
 - 1- 12 INCH AIR DUCT
 - UP TO 60 HOUR RUN TIME
- POSITIVE AIR SHUTOFF WITH AUTO RESET
 - TRUE FLAMELESS GLYCOL/AIR HEATER
- PLC CONTROLLED COLD START & COOL DOWN SEQUENCE
 - EASY ACCESS TO THE UNIT FOR MAINTENANCE
 - MULTIFUNCTION SOLUTION
- OPTIONAL LED LIGHT TOWER WITH TELESCOPIC HYDRAULIC VERTICAL 23 FT MAST, 188,000 TOTAL LMS

WWW.THAWZALL.COM





USER FRIENDLY CONTROLS

- SIMPLE START UP AT THE TOUCH OF A BUTTON
- ADJUSTABLE SUPPLY TEMPERATURE FOR GLYCOL & AIR HEAT. VARIABLE AIR FLOW
- UP TO THE SECOND PERFORMANCE INFORMATION AVAILABLE

SERVICE FRIENDLY

- ENGINE COOLANT, ENGINE OIL OIL FILTER, FUEL FILTER & AIR FILTER, GLYCOL FILTERS
- NO DEF FLUID
- NO HYDRAULIC FLUID, NO HYDRAULIC FILTERS,
- NO HYDRAULIC LEAKS, NO HYDRAULIC OIL TO DISPOSE OF



SPECIFICATIONS

- Hose Reel: 3000 ft (6-500 ft 5/8 hose)
- Glycol Tank: 96 US Gal
- Total Heating Capacity: 450,000 BTU/HR
- CFM: Variable up to 3000 CFM
- Max Heat Output: 200°F/93°C
- Optional Engine: Fiat F34 W/Mecc Alte Generator 60 KW
- Optional Engine: Deutz TCD 2.9 W/Mecc Alte Generator 60 KW
- Positive Air Shutoff: Auto Reset
- Air Handler: 3 HP Blower
- LxWxH: 14'10"x7'10"x7'6"
- Fuel Capacity: 190 Gallons/ 719 Liters
- Fuel Containment: 120%
- Fuel Burn (Max): Up to 4.90 GPH
- Run time: Up to 60 Hours
- Weight: 7840 lbs Dry, 9360 lbs Full of Fuel
- Outlets: 1X12"

As a result of our constant drive to improve our product offering specifications are subject to change.

